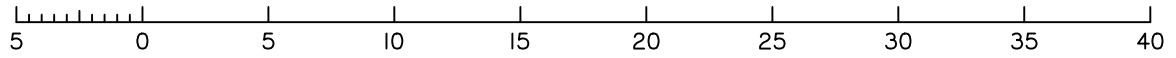


BUSHFIRE ATTACK LEVEL (BAL) LEGEND

| | | | | | |
|--|------------|--|--------|--|----------|
| | FLAME ZONE | | BAL 29 | | BAL 12.5 |
| | BAL 40 | | BAL 19 | | |

BAL NOTES
BAL AREAS PLOTTED FROM 'BUSHFIRE HAZARD ASSESSMENT AND MANAGEMENT PLAN' BY GREEN TAPE SOLUTIONS. PLAN MUST BE PLOTTED IN COLOUR.

Scale 1:300 - Lengths are in Metres.

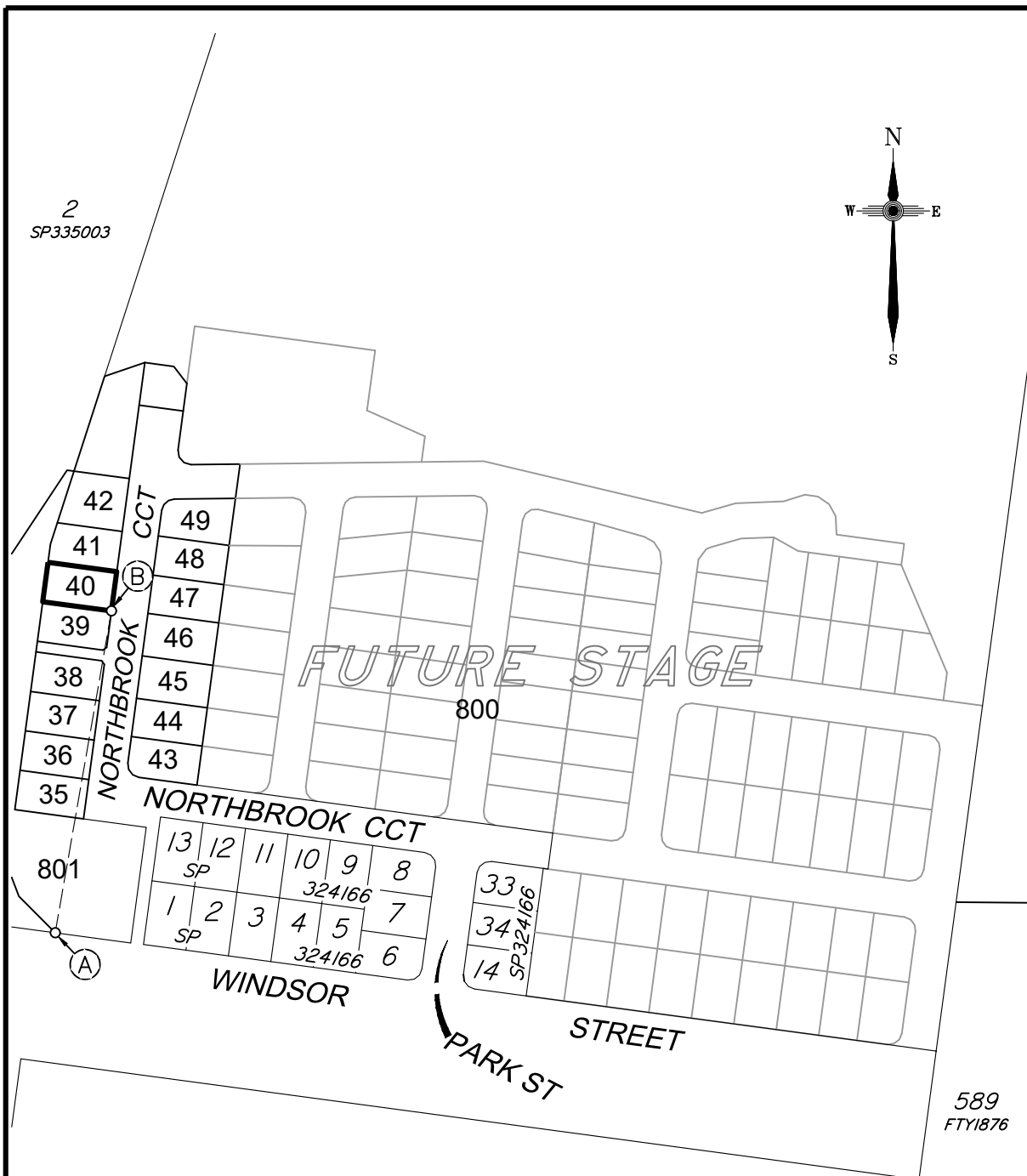


BUSHFIRE ATTACK LEVEL FOR PROPOSED ALLOTMENT 40

Dated 10th July 2025

This plan shows details of Proposed Allotment 40 on the Approved Proposal Plan 12499-PRO-02 Rev A dated 23rd January 2019 which complies with the Development Approval (DA/36806/2018/V3RL) dated 22nd March 2019, and Operational Works Approval (DA/2021/5269) dated 15th February 2022, approved by Moreton Bay City Council, subject to conditions.

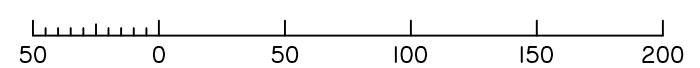
The description of the proposed allotment 40, is as part of Lot 800 on SP324166, formally Lot 1 on SP335003, and situated at 187 Windsor Street, Woodford, commencing at an initial point (A) being the south eastern most point of Lot 2 on SP335003 and thence bounding off on a bearing of 9°55'25" and a distance of 152.437 to point (B) at proposed allotment 40, and containing an area of 600 square metres, more or less.



CADASTRAL CONNECTION

A - B 9°55'25" 152.437

Scale 1:3000 - Lengths are in Metres.



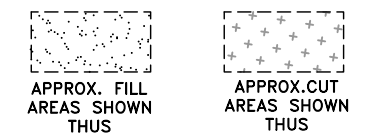
Subdivision Estate WDC187 Pty Ltd

Marketing Plan

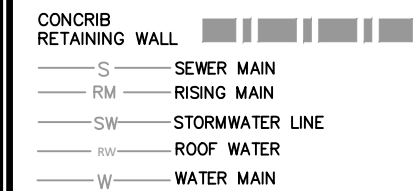
Windsor Street Woodford

PROPOSED STAGE 2 ALLOTMENTS 35 - 49
Cancelling Lot 800 on SP324166 (Formally Lot 1 on SP335003)

PROPOSED LOT 40



+2.0 FILL HEIGHT **-2.0** CUT HEIGHT
-16.5 FINAL ASCONSTRUCTED CONTOURS at 0.25m INTERVALS.
-1.0% SLOPE DIRECTION OF LOT



ENGINEERING DESIGN BY JFP URBAN CONSULTANTS
FILLING ON THIS LOT IS COMPLETED TO LEVEL ONE SUPERVISION AND TESTING IN ACCORDANCE WITH THE REQUIREMENTS OF AS 3798-2007 "GUIDELINES ON EARTHWORKS FOR COMMERCIAL AND RESIDENTIAL DEVELOPMENTS".

| Revisions | Surveyed | Drawn | Checked | Passed | Date |
|------------------------|----------|-------|---------|--------|----------|
| C/E/WORKS LEVELS | - | LA | LA | LS | 10/07/25 |
| B UPDATE | - | LA | LA | LS | 8/11/23 |
| A ORIGINAL PLAN OTHERS | - | LA | LA | LS | 23/03/23 |



PO Box 6334, Maroochydore BC QLD 4558
10/1 Newspaper Place, Maroochydore QLD 4558
Mobile: 0412 666 516
Email: mail@landsurveyingdynamics.com
Web: www.landsurveyingdynamics.com
Land Surveying Dynamics (LSD) Pty Ltd
ACN 154 593 870

Signed
Cadastral Surveyor/Director
Date 10/07/2025

Map Ref.: 9444-23314
Horiz. Datum MGA Z56
Origin GNSS CORS
Vert. Datum AHD
Origin PSM 50297
RL 129.835 AHD
Locality: WOODFORD
Local Government: MORETON BAY CITY

SHEET 1 OF 1 Scale As shown at A3
COMPUTER FILE 12499-BAL
DRAWING NUMBER 12499-BAL-40 REV. C

2025/07/10 C:\Users\veo\Dropbox\LSD2025\Jobs\Current\12499\Woodford\187 Windsor St Woodford\Woodford\12499-BAL.dwg